



[www.ceramiccement.com](http://www.ceramiccement.com)

Ceramic Cement Corporation(C<sub>3</sub>)

— Eko•Rok —

A quick return to service, ultra high  
strength, eco-safe ceramic  
concrete/asphalt repair material

Click each slide to proceed

# EkoRok = Superior Concrete Repair Solutions

**A chemically-bonded phosphate ceramic concrete**

- 1. Non-toxic** - *no fly ash, no toxins*
- 2. Fast setting** - *traffic moving within 3-hrs.*
- 3. High strength** - *5000 psi in 3-hrs. / 7000 psi in 24-hrs. / 12,000 to 15,000 psi in 28-days, industry categorized as Ultra High Performance Concrete (UHPC)*
- 4. All weather use** - *with instruction can be applied in cold, hot and wet conditions*
- 5. Summary** - *EkoRok is competitively priced as an Ultra High Performance Concrete (UHPC) that provides unique, user-friendly, eco-safe, never-before-possible Portland concrete / asphalt repair solutions.*

# **WASHINGTON STATE DOT/ASTM STANDARD TEST RESULTS**

**Washington State Department of Transportation  
Materials Laboratory**

**PO Box 47365 Olympia WA 98504 / 1655 S. 2nd Ave  
Tumwater WA 98512**

**Result Code: Informational**

- 11/10/2011
- Informational Thomas E. Baker, P.E.
- State Materials Engineer
- Michael Polodna, P.E.
- Structural Material Testing Engineer
- (360) 709-5446



**Remarks: Meets the strength and bonding requirements of WSDOT Standard Specification 9-20.2 (1) as a patching mortar. Make: EkoRok**

<b>Test Name:</b>	<b>ASTM Test Spec. / EkoRok Test Result</b>	
3-hour cube compressive strength ASTM C109	3000 psi	/ 5530 psi
24-hour cube strength ASTM C 109	5000 psi	/ 7026 psi
Bond Strength by ASTM C 882	1000 psi	/ 2426 psi
modified by ASTM C 928		



# EkoRok Test Patch

I-5 Pacific Avenue Olympia

March 16<sup>th</sup> 2012





# Saw Cutting, Prep Work



# BREAKING UP OLD PAVEMENT PATCH



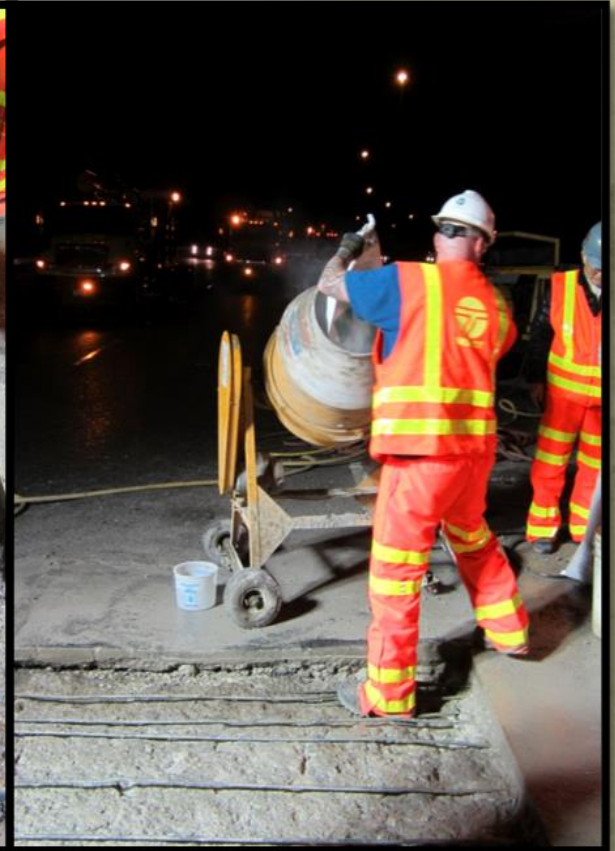


# CONTINUED PREP, FINDING BOTTOM





CLEAN EDGES, REMOVE CAGE, LEAVE RE-BAR.





# APPLYING IN COLD, WET CONDITIONS (3-16-12) 8:30 pm





# POURING VERTICAL STRIPS





# Finished Patch Set Up (3-16-12) 11 pm





3-DAYS AFTER BEING OPEN TO TRAFFIC (3-19-12)



## 7-DAYS AFTER BEING OPEN TO TRAFFIC (3-23-12)





# CERAMIC CEMENT CORPORATION (C<sub>3</sub>)

- C<sub>3</sub> is based in Seattle, WA.
- For further information go to
- <http://www.ceramiccement.com/>
  - or contact
- Judd Hamilton / 206-935-7161 /  
judd@ceramiccement.com
- John Jaquith / 253-592-2682 /  
john@ceramiccement.com