



www.ceramiccement.com

Ceramic Cement Corporation(C₃)

RepairRok

A quick return to service, ultra high strength, eco-safe ceramic concrete/asphalt repair material

Click each slide to proceed

RepairRok = Superior Concrete Repair Solutions

A chemically-bonded phosphate ceramic concrete

1. **Non-toxic** - *no fly ash, no toxins*
2. **Fast setting** - *traffic moving within 3-hrs.*
3. **High strength** - *5000 psi in 3-hrs. / 7000 psi in 24-hrs. / 12,000 to 15,000 psi in 28-days, industry categorized as Ultra High Performance Concrete (UHPC)*
4. **All weather use** - *with instruction can be applied in cold, hot and wet conditions*
5. **Summary** - *RepairRok is competitively priced as an Ultra High Performance Concrete (UHPC) that provides unique, user-friendly, eco-safe, never-before-possible Portland concrete / asphalt repair solutions.*

WASHINGTON STATE DOT/ASTM STANDARD TEST RESULTS

Washington State Department of Transportation
Materials Laboratory

PO Box 47365 Olympia WA 98504 / 1655 S. 2nd Ave
Tumwater WA 98512

Result Code: Informational

- 11/10/2011
- Informational Thomas E. Baker, P.E.
- State Materials Engineer
- Michael Polodna, P.E.
- Structural Material Testing Engineer
- (360) 709-5446

Remarks: Meets the strength and bonding requirements of WSDOT Standard Specification 9-20.2 (1) as a patching mortar. Make: RepairRok

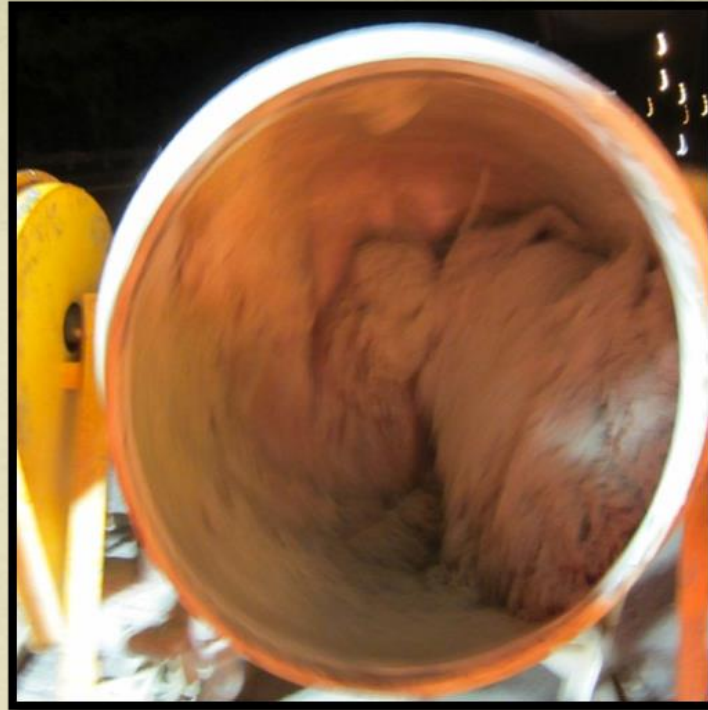
Test Name: ASTM Test Spec. / RepairRok Test Result

3-hour cube compressive strength ASTM C109 3000 psi / 5530 psi

24-hour cube strength ASTM C 109 5000 psi / 7026 psi

Bond Strength by ASTM C 882 1000 psi / 2426 psi

modified by ASTM C 928



RepairRok Test Patch

I-5 Pacific Avenue Olympia

March 16th 2012



Saw Cutting, Prep Work



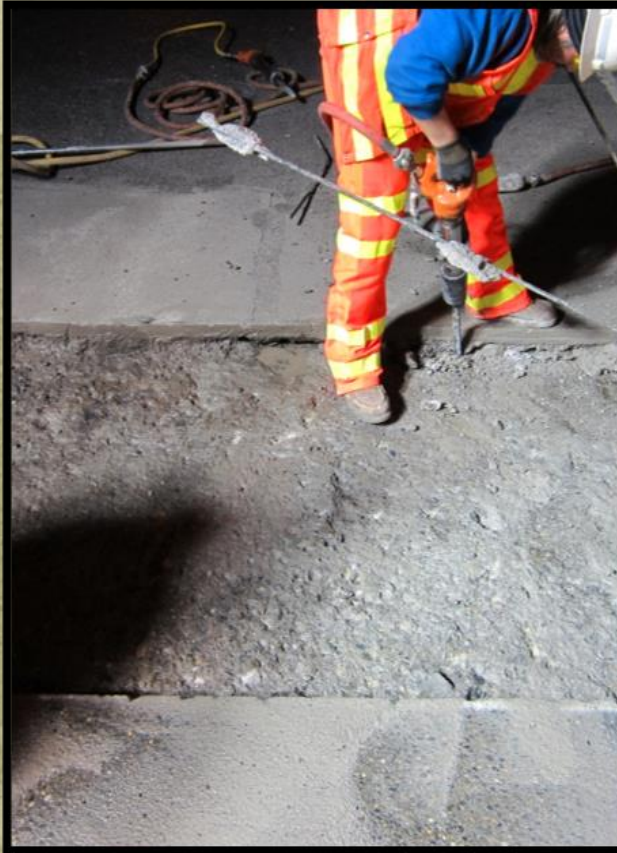
BREAKING UP OLD PAVEMENT PATCH



CONTINUED PREP, FINDING BOTTOM



CLEAN EDGES, REMOVE CAGE, LEAVE RE-BAR.



APPLYING IN COLD, WET CONDITIONS (3-16-12) 8:30 pm



POURING VERTICAL STRIPS



Finished Patch Set Up (3-16-12) 11 pm



3-DAYS AFTER BEING OPEN TO TRAFFIC (3-19-12)



7-DAYS AFTER BEING OPEN TO TRAFFIC (3-23-12)



CERAMIC CEMENT CORPORATION (C₃)

- C₃ is based in Seattle, WA.
- For further information go to
- <http://www.ceramiccement.com/>
 - or contact

Mark Rockey / 505-525-1092
rokey@ceramiccement.com

John Jaquith / 253-592-2682
john@ceramiccement.com

Judd Hamilton / 206-935-7161
judd@ceramiccement.com